

Missouri Department of Health and Senior
Services (DHSS)

Weekly Communicable Disease Report

Missouri Department of Health and Senior Services (DHSS)

Weekly Communicable Disease Report

Disease or Condition:

Creutzfeldt-Jakob Disease (CJD)

Report for Week 44 of 2017

Run Date = 07NOV17

For DHSS and LPHA Internal Use Only.

Data Included in This Report is Provisional.

**Data Source: Confirmed and Probable Cases of Diseases & Conditions
entered into the Missouri Health Surveillance Information System (WEBSURV)**

Missouri Department of Health and Senior Services (DHSS)
Weekly Communicable Disease Report
Quartile Analysis of Year-to-date Counts for Week 44, 2017
Creutzfeldt-Jakob Disease (CJD)

County	Week 44 YTD ¹	Week 43 YTD ¹	Week 42 YTD ¹	Five Year 1 st Quartile	Five Year Median	Five Year 3 rd Quartile	Change from Week 43 to Week 44	Change from Week 44 to 5-Year Median	Rate per 100,000 Week 44	Relative Rate Week 44	First Week Reported ²	Last Week Reported
Cape Girardeau	1	1	1	No Data	0	No Data	0.0%	0.0%	1.27	11.06	6	6
Jasper	1	1	1	No Data	0	No Data	0.0%	0.0%	1.35	11.77	10	10
St Francois	1	1	1	No Data	0	No Data	0.0%	0.0%	1.50	13.07	20	20
St Louis	3	3	3	2	2	2	0.0%	50.0%	0.30	2.60	21	38
St Louis City	1	1	1	1	1	1	0.0%	0.0%	0.32	2.75	37	37
Troop C Total	5	5	5	3	3	5	0.0%	66.7%	0.22	1.92	20	38
Troop D Total	1	1	1	2	2	3	0.0%	(50.0%)	0.11	0.98	10	10
Troop E Total	1	1	1	No Data	0	No Data	0.0%	0.0%	0.30	2.61	6	6
State Total	7	7	7	7	10	12	0.0%	(30.0%)	0.12	1.00	6	38

¹ Analysis Results Legend:

The Year-to-Date (YTD) count is above the 5-year median.

The Year-to-Date (YTD) count is above the 5-year 3rd quartile for a period of one or two weeks.

The Year-to-Date (YTD) count is above the 5-year 3rd quartile for a period of three weeks.

The Year-to-Date (YTD) count is above the 5-year Maximum.

² First Week Reported in 2017

Missouri Department of Health and Senior Services (DHSS)
Weekly Communicable Disease Report for Week 44, 2017
Disease or Condition Analysis
Compared to Last Report run on 10/31/2017 for Week 43, 2017
Creutzfeldt-Jakob Disease (CJD)

County	Data Status ^{1,2}	^{1st} Week Reported Current Report	^{1st} Week Reported Last Report	Change in Count	Week 44 Quartile Results ³	Week 43 Quartile Results ⁴	Data Trend Analysis ⁵	Data Elevation Analysis ⁶
Cape Girardeau	Old	6	6	0	Above Median	Above Median	Flat	Above Normal
Jasper	Old	10	10	0	Above Median	Above Median	Flat	Above Normal
St Francois	Old	20	20	0	Above Median	Above Median	Flat	Above Normal
St Louis	Old	21	21	0	Above 3 rd Quartile	Above 3 rd Quartile	Flat	Elevated
St Louis City	Old	37	37	0	Below Median	Below Median	Flat	Below Normal
Troop C Total	Old	20	20	0	Above Median	Above Median	Flat	Above Normal
Troop D Total	Old	10	10	0	Below Median	Below Median	Flat	Below Normal
Troop E Total	Old	6	6	0	Above Median	Above Median	Flat	Above Normal
State Total	Old	6	6	0	Below Median	Below Median	Flat	Below Normal

¹ Data Status: Old=Continuing Occurrence in 2017, New=First Occurrence in 2017 and Out=Case was Removed from WEBSURV

² First Week Reported and/or First Occurrence of Disease or Condition in 2017

³ Week 44 Quartile Results are from the Current Report

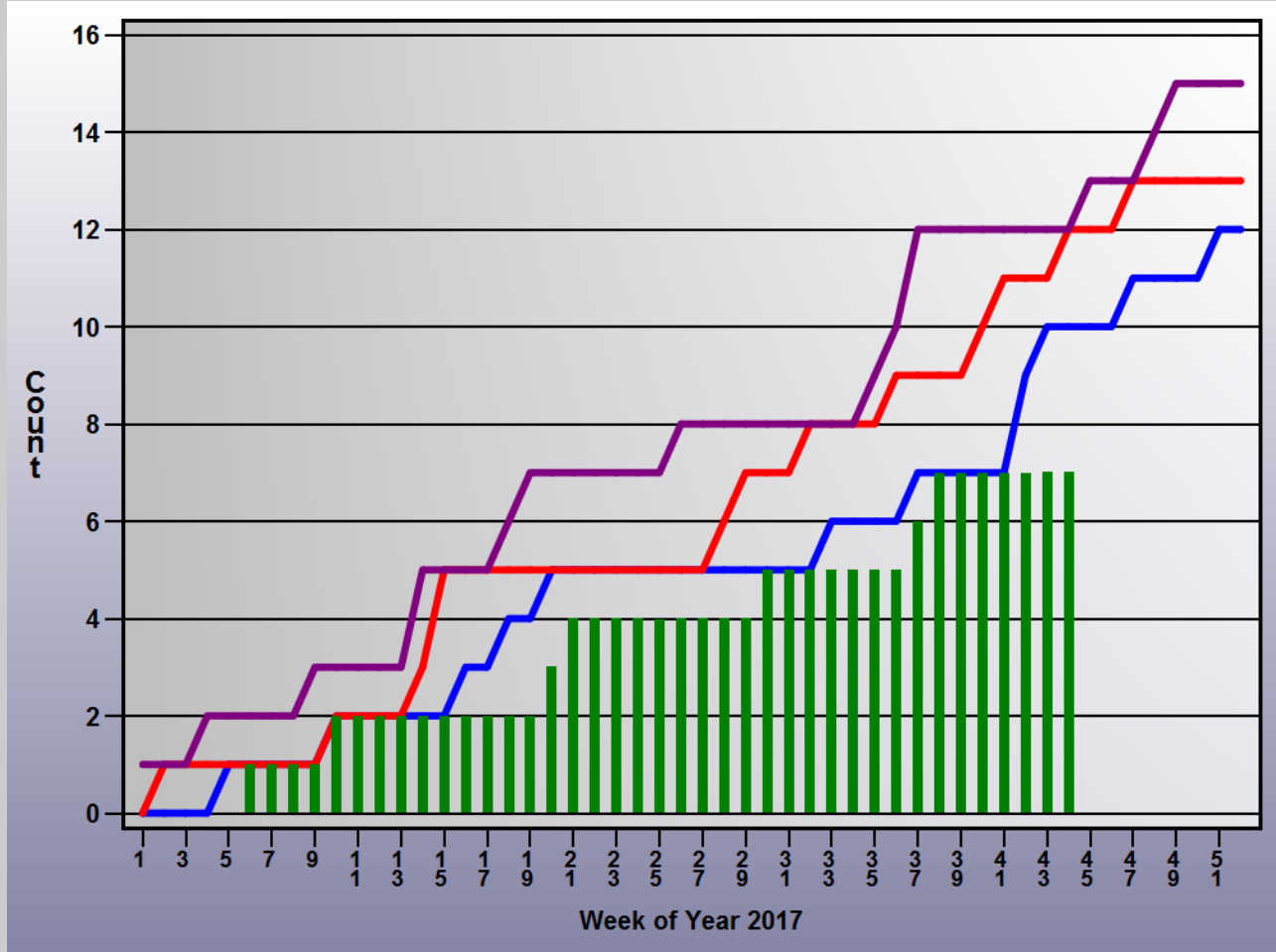
⁴ Week 43 Quartile Results are from the Last Report

⁵ Based on Change in Count Current Report vs Last Report

⁶ Based on Quartile Analysis from Current Report where: Below Normal=below median, Above Normal= above median, Elevated=above 3rd quartile and Very Elevated=Above Maximum.

Creutzfeldt-Jakob Disease (CJD)

YTD Count in 2017 YTD Median (2012 to 2016)
 YTD Third Quartile (2012 to 2016) YTD Maximum (2012 to 2016)



5

Missouri Department of Health and Senior Services (DHSS)
Weekly Communicable Disease Reports
Comparison of 4-week Count Mean for Week 44, 2017 with Historical Limits
Creutzfeldt-Jakob Disease (CJD)

County	Analysis Results ¹	4-week Count Mean for Week 44 ²	Upper Limit for Week 44 ³	4-week Count Mean for Week 43 ²	Upper Limit for Week 43 ³	4-week Count Mean for Week 42 ²	Upper Limit for Week 42 ³
Troop D Total		0.0	0.1	0.0	0.1	0.0	0.1
State Total		0.0	0.4	0.0	0.4	0.0	0.4

¹ Analysis Results Legend for Week 44:

The 4-week Count mean is between the Historical Mean and the Historical Mean plus 1 Std. Dev.

The 4-week Count mean is between the Historical Mean plus 1 Std. Dev. and the Historical Mean plus 2 Std. Dev.

The 4-week Count mean is between the Historical Mean plus 2 Std. Dev. and the Historical Mean plus 3 Std. Dev.

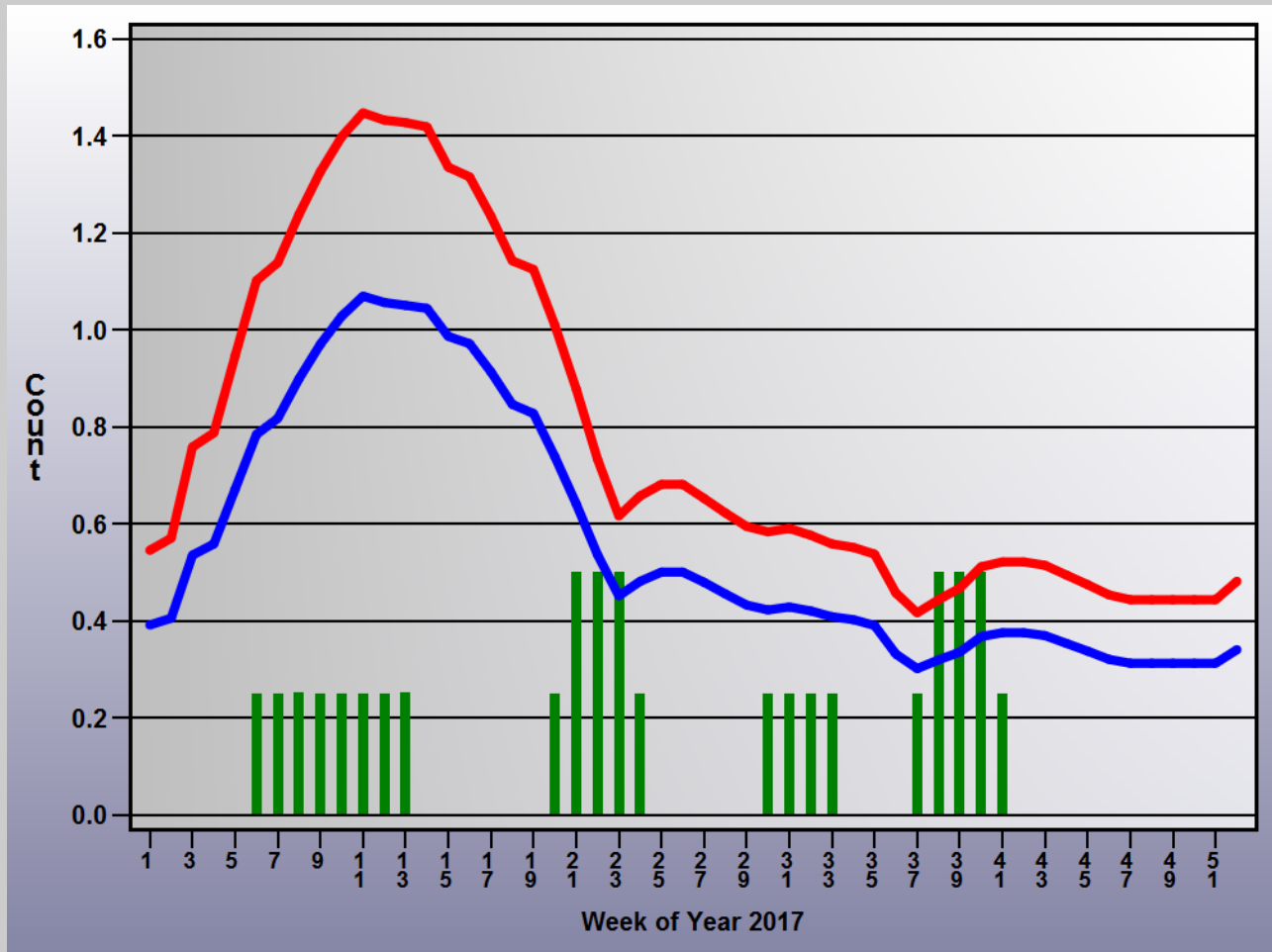
The 4-week Count mean is above the Historical Mean plus 3 Std. Dev.

² 4-week Count mean based on the current and 3 previous weeks.

³ The Historical Count mean plus two standard deviations based on the current week, 7 previous weeks and 4 subsequents or leading weeks for the past five years.

Creutzfeldt-Jakob Disease (CJD)

4-week Count Mean Historical Limit(2 std) Historical Limit(3 std)



4-week count mean based on the current and 3 previous weeks

The mean plus two standard deviations based on the current week, 7 previous weeks and 4 subsequents or leading weeks for the past five years

The mean plus three standard deviations based on the current week, 7 previous weeks and 4 subsequents or leading weeks for the past five years

Weekly Communicable Disease Report
Year-to-Date Counts and Rates for Week 44 , 2017

Creutzfeldt-Jakob Disease (CJD)

County	Week 44 YTD	Week 44 Rate¹	Week 44 Relative Rate²	Change in Count From Current Report³	Change in Count From Last Report⁴
Cape Girardeau	1	1.3	11.1	0	0
Jasper	1	1.4	11.8	0	0
St Francois	1	1.5	13.1	0	0
St Louis	3	0.3	2.6	0	0
St Louis City	1	0.3	2.8	0	0

¹ Rates are Year-to-Date Counts per 100,000 population for Week 44, 2017

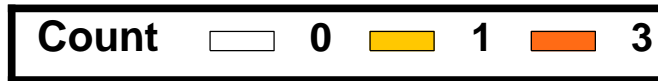
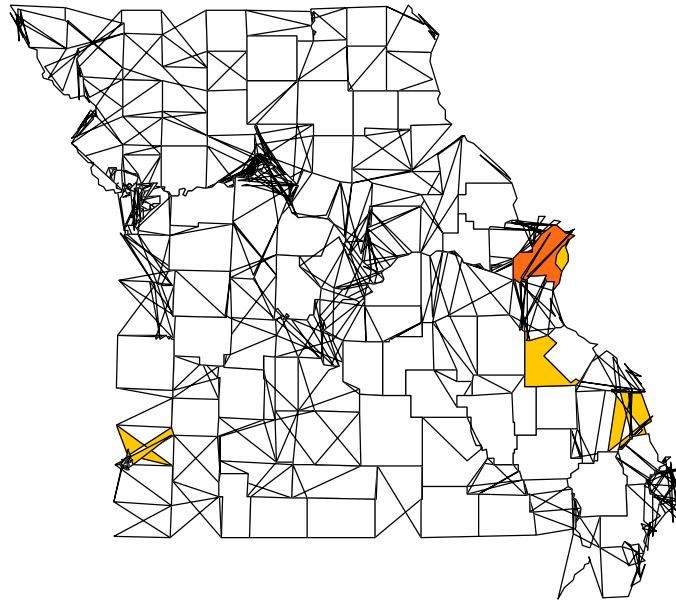
² The relative rate is computed as the county or district rate divided by the overall state rate

³ Current Report was run on 11/07/2017 for Week 44, 2017

⁴ Last Report was run on 10/31/2017 for Week 43, 2017

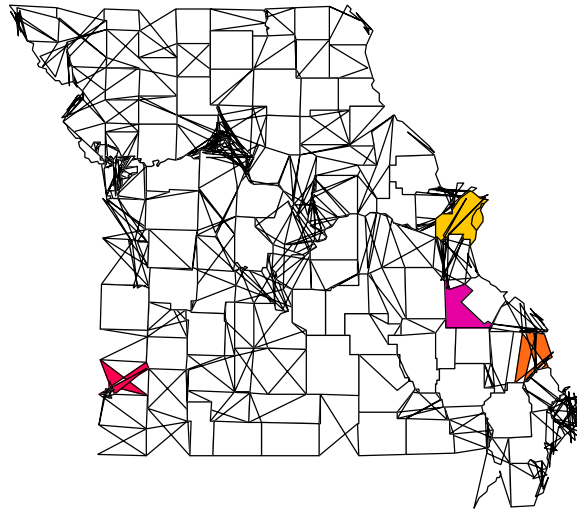
Missouri Department of Health and Senior Services (DHSS)
Weekly Communicable Disease Report
YTD Count for Week 44, 2017
Creutzfeldt-Jakob Disease (CJD)

Missouri Department of Health and Senior Services (DHSS)
Weekly Communicable Disease Report
YTD Count for Week 44, 2017
Creutzfeldt-Jakob Disease (CJD)



Missouri Department of Health and Senior Services (DHSS)
Weekly Communicable Disease Report
Rates for Week 44, 2017
Creutzfeldt-Jakob Disease (CJD)

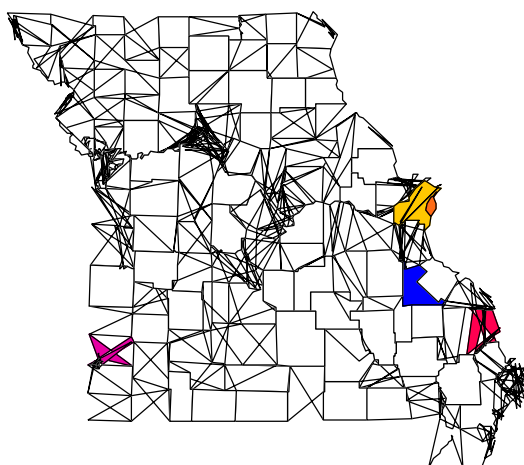
Missouri Department of Health and Senior Services (DHSS)
Weekly Communicable Disease Report
Rates for Week 44, 2017
Creutzfeldt-Jakob Disease (CJD)



Rates are Year-to-Date Counts per 100,000 population for Week 44, 2017

Missouri Department of Health and Senior Services (DHSS)
 Weekly Communicable Disease Report
 Relative Rates for Week 44, 2017
Creutzfeldt-Jakob Disease (CJD)
 State Rate per 100,000 = 0.1

Missouri Department of Health and Senior Services (DHSS)
 Weekly Communicable Disease Report
 Relative Rates for Week 44, 2017
Creutzfeldt-Jakob Disease (CJD)
 State Rate per 100,000 = 0.1



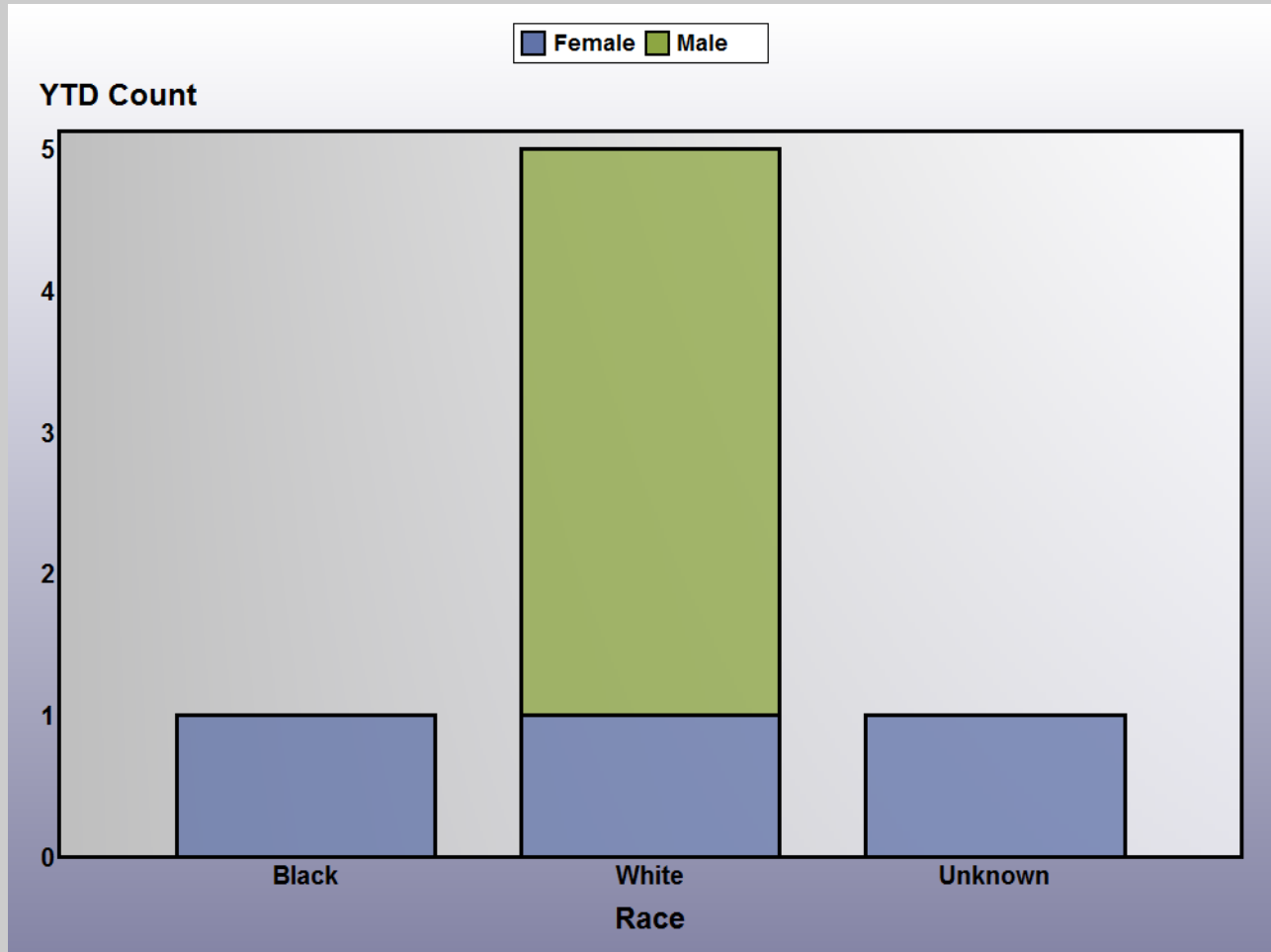
Relative Rates					
	0.0		2.6		2.8
	11.1		11.8		13.1

The relative rate is computed as the county or district rate divided by the overall state rate

Missouri Department of Health and Senior Services (DHSS)
 Weekly Communicable Disease Reports
 Cross Tabulations of YTD Count for Week 44, 2017
 State of Missouri
 Creutzfeldt-Jakob Disease (CJD)

Age and Gender		Black	White	Unknown	All
35 to 44	Female		1		1
	All		1		1
45 to 54					
	Male		1		1
	All		1		1
55 to 64					
	Female			1	1
	Male		2		2
	All		2	1	3
65 plus					
	Female	1			1
	Male		1		1
	All	1	1		2
All		1	5	1	7

Missouri Department of Health and Senior Services (DHSS)
Weekly Communicable Disease Reports
Cross Tabulations of YTD Count for Week 44, 2017
State of Missouri
Creutzfeldt-Jakob Disease (CJD)



Missouri Department of Health and Senior Services (DHSS)
Weekly Communicable Disease Reports
Cross Tabulations of YTD Count for Week 44, 2017
State of Missouri
Creutzfeldt-Jakob Disease (CJD)

