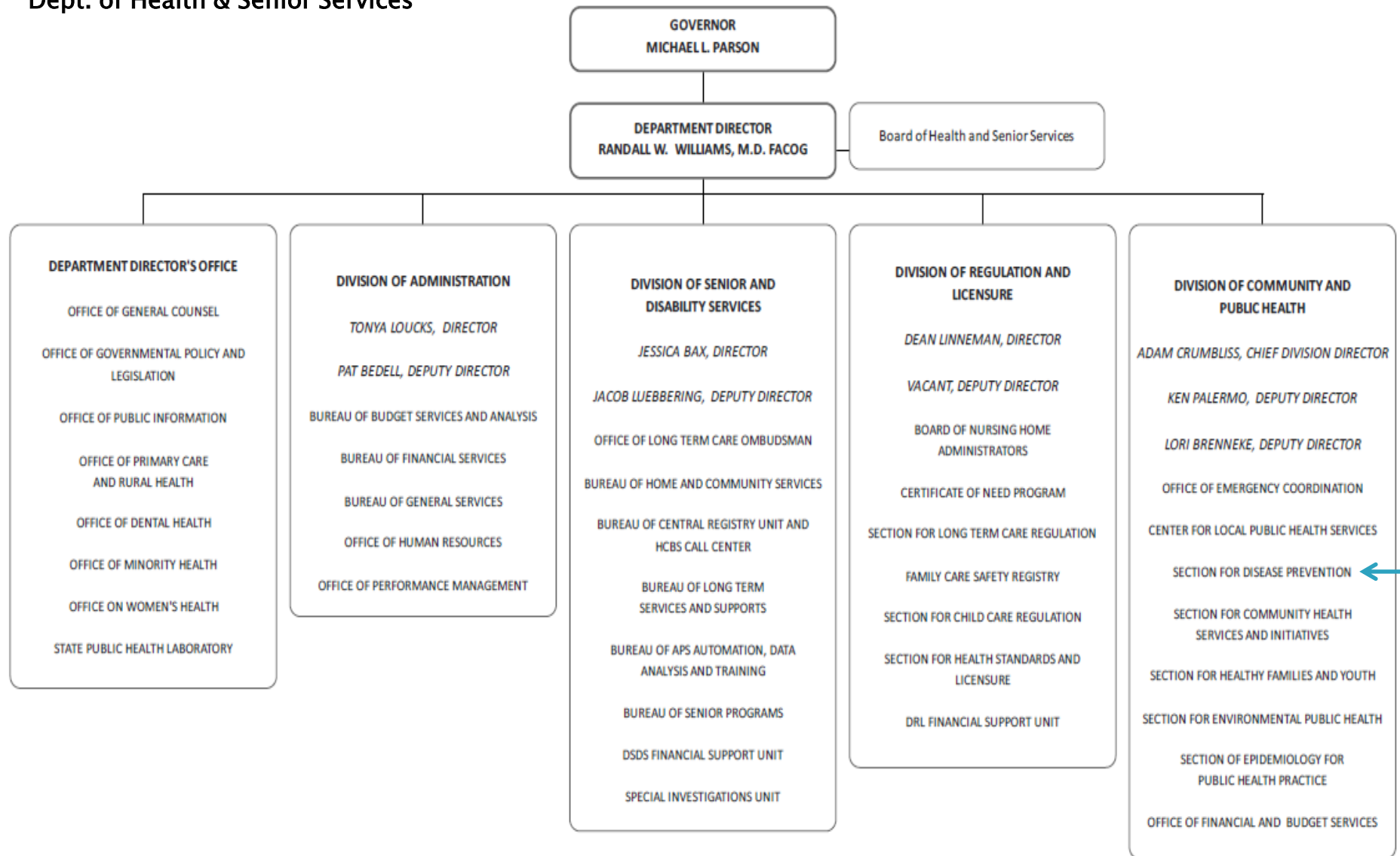


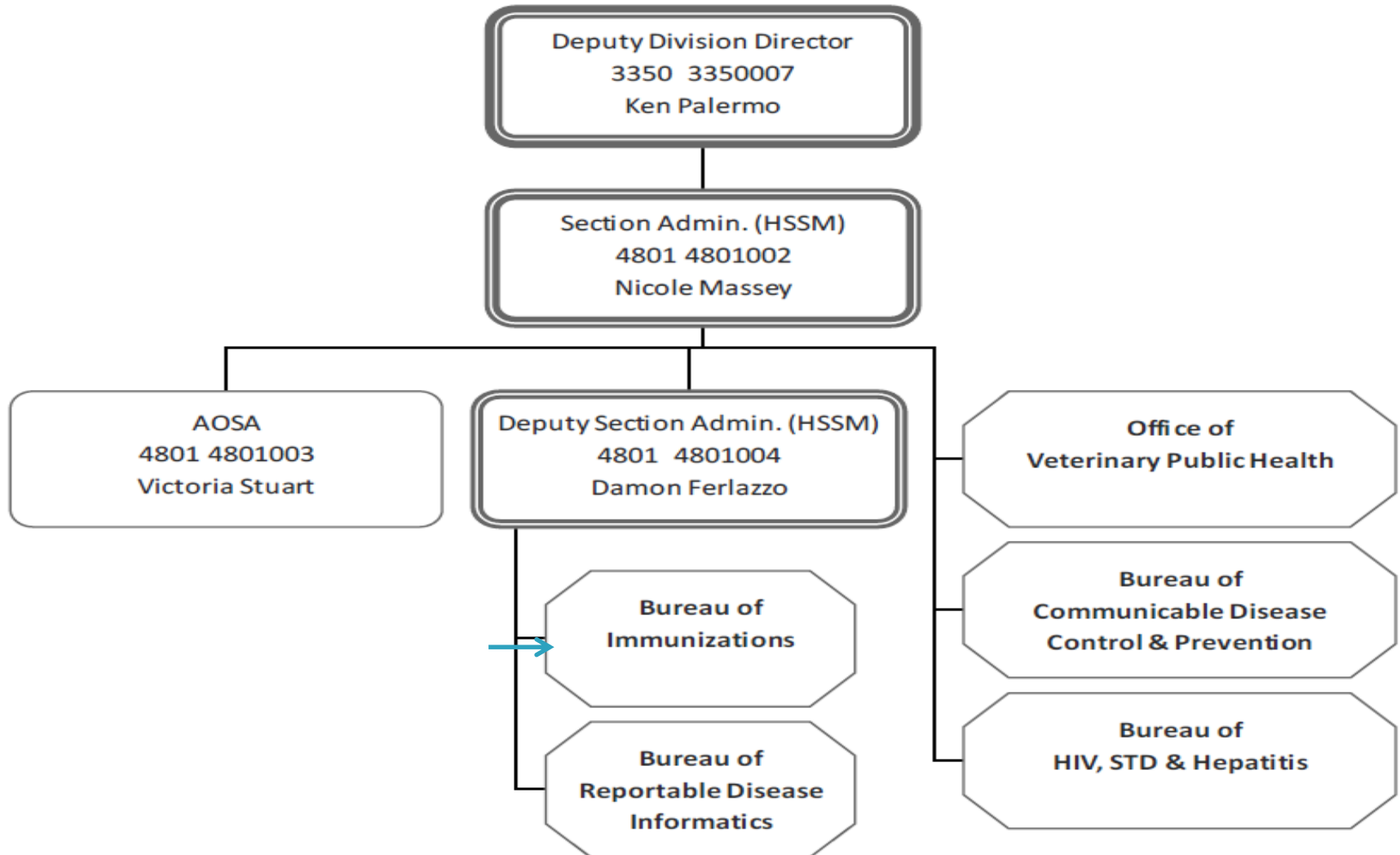
# Immunization Program Overview

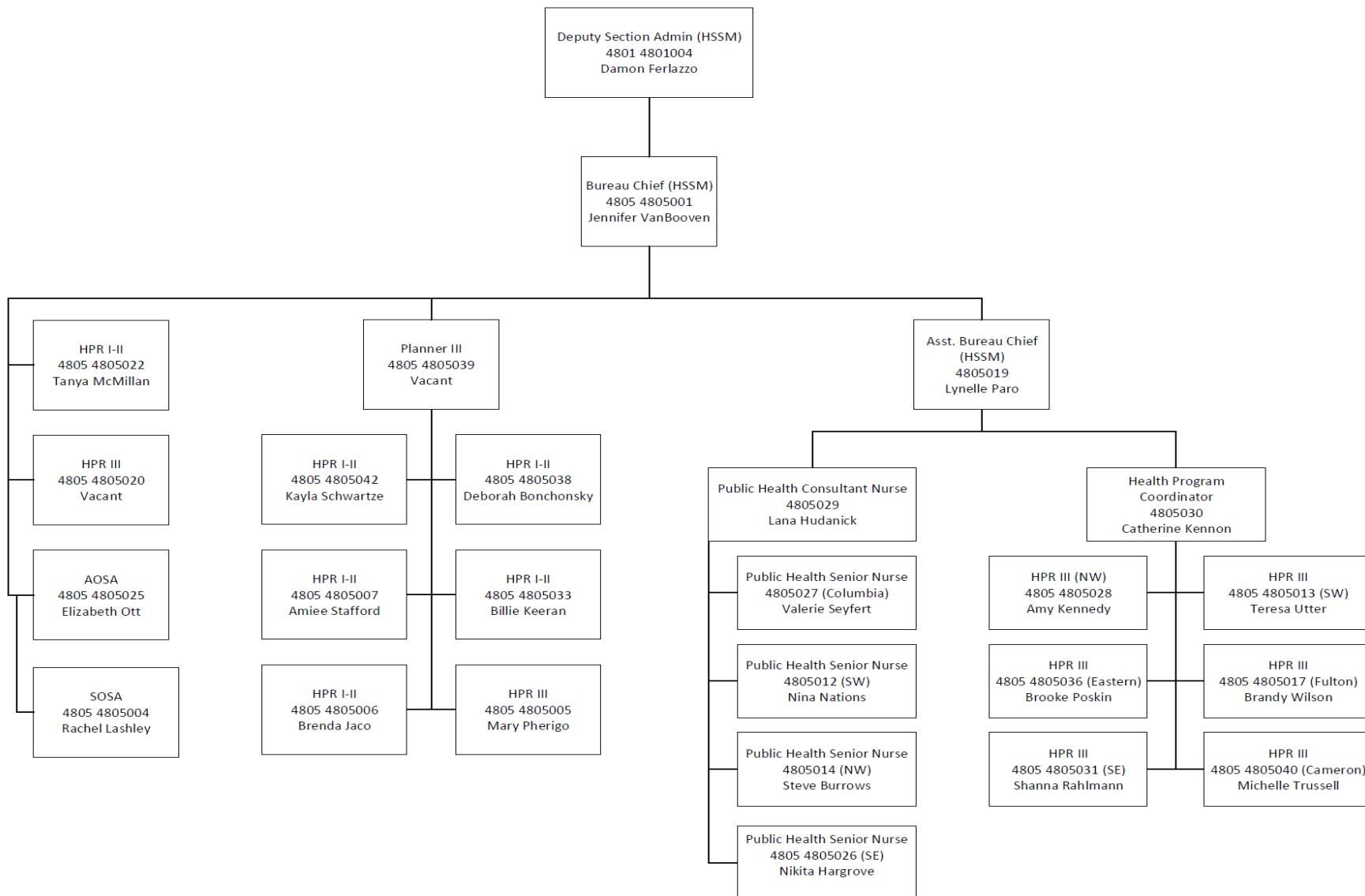
Jennifer VanBooven, Chief  
Bureau of Immunizations

# Dept. of Health & Senior Services



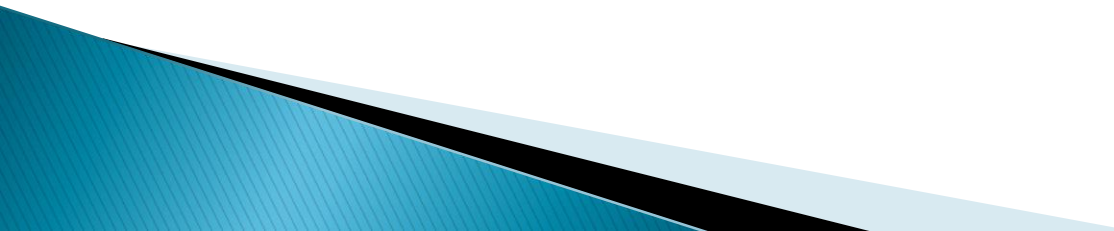
Dept. of Health & Senior Services  
Division of Community & Public Health



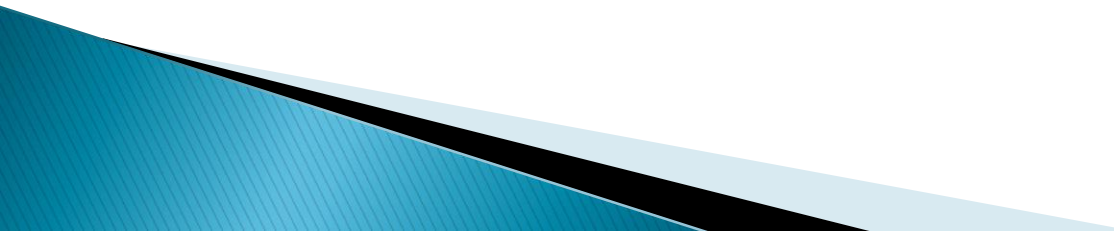


**Dept. of Health & Senior Services  
Division of Community & Public Health  
Section for Disease Prevention  
Bureau of Immunizations**

# Mandates:

- ▶ CDC mandates/requirements followed
    - Our policies may be stricter than CDC
  - ▶ Promulgate Rules
  - ▶ Bills
- 

# Advisory Committee on Childhood Immunizations

- ▶ 30 members from across Missouri
  - ▶ 13 Board Members
  - ▶ 4 routine meetings annually
  - ▶ Provides input and feedback on Missouri's Immunization Program
- 

# Immunization Funding

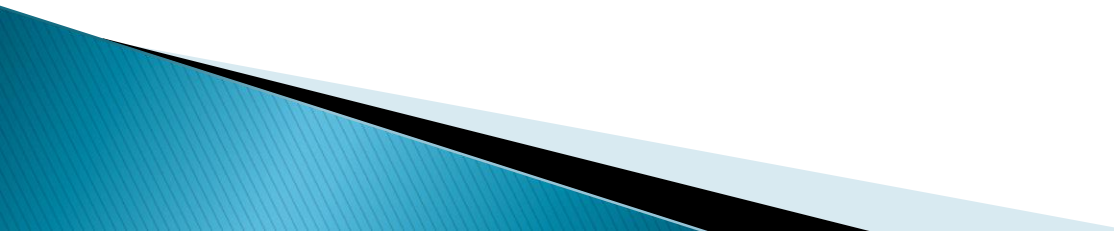
- ▶ Vaccine = Over \$71 Million
- ▶ 100% federally funded by CDC
  - Cooperative Agreement from CDC
  - Prevention and Public Health Fund (PPHF) Grants

# Cooperative Agreement

- ▶ 5 year agreement
  - Beginning 2<sup>nd</sup> year
  - Project period is July 1, 2020 – June 30, 2021
  - Must reapply each year
  - Funding typically starts over each year
  - Funding not used is returned to CDC
  - CDC typically provides the funding in rounds
  - Apply online through eGratis (Grants application tracking information system)



# Cooperative Agreement

- ▶ Fixed dollar amount
  - ▶ 37 objectives
  - ▶ 289 activities
  - ▶ We provide additional activities
  - ▶ Funds 61 employees at DHSS (5%–100%)
  - ▶ Reporting – mid year and final reports
- 

# Grant Tracking

## ▶ Budget

- Monthly meetings with DCPH OFABS staff
- Monitor funding use by other program areas

# Vaccines for Children (VFC) Program

- ▶ **VFC eligibility– birth to 19<sup>th</sup> birthday & one of following:**
  - Medicaid eligible
  - Uninsured
  - Underinsured
  - American Indian/Alaskan Native
  
- ▶ **VFC**
  - Over 71 million dollars representing over 1 million vaccine doses distributed
  - Over 660 program providers
    - Private physicians
    - Local Public Health Agencies (LPHAs)
    - Federally Qualified Health Centers
    - Rural Health Clinics

# VFC Program

- ▶ Enroll annually (2018 was online)
- ▶ VFC primary and backup must complete 1 educational training per year
- ▶ Keep all records for 3 years
- ▶ Must submit the following monthly via Vaccine Ordering System or Fax:
  - Accountability form
  - Temperature log
    - Temperatures checked twice per day and noted on log
  - Order form
  - Borrowing report, wastage and transfer if applicable
    - If transferring vaccine must have approval from liaison
- ▶ **As of January 1, 2021, VFC providers will be required to utilize ShowMeVax.**

# VFC Program

- ▶ Vaccine account is virtual
- ▶ Population Estimate Survey (PES)
  - Completed once per year– data from Medicaid
- ▶ Cost and Affordability Tool (CAT)
  - VFC
  - 317
  - CHIP
- ▶ Monthly Spend Plan
  - Budgets the vaccine in VTrckS

# Vaccine

- ▶ 2019–VFC, CHIP & 317
  - \$73.7 Million
  - 1.2 Million doses shipped
- ▶ CHIP
  - About \$1 million annually
- ▶ 317
  - About \$1.2 million, each year is different

# Section 317 Vaccine

- ▶ Who qualifies?
  - Uninsured or underinsured adults (19 and over)
- ▶ What vaccines can they receive?
  - All but Zoster vaccine
  - Hep A has restrictions
- ▶ Where can they get the vaccines?
  - All LPHA's and 4 FQHC's in St. Louis

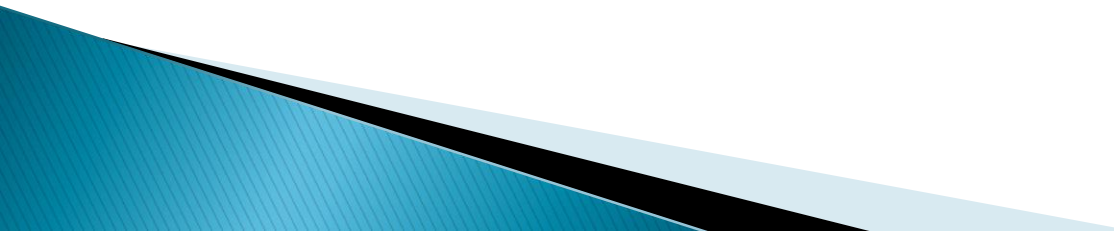
# Vaccine Orders–Immunization Operations Team

## ▶ 7 Team Members

- 5 – dedicated to answering ShowMeVax questions and approving VFC orders
- 1 – dedicated to HL7 onboarding
- 1 – dedicated to vaccine ordering and CDC spend plans



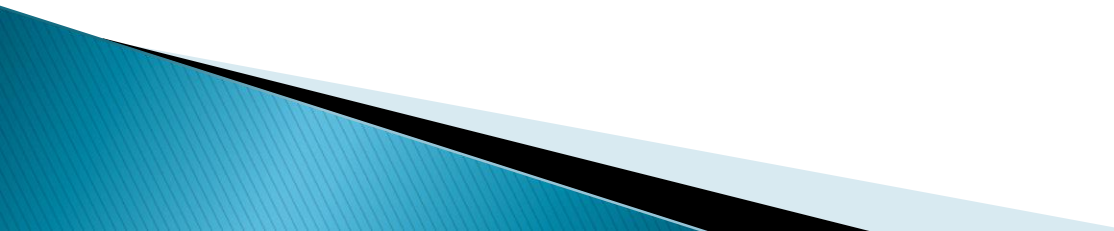
# VFC/IQIP Visits–IQMs

- ▶ Each VFC provider must have a VFC visit every 24 months
  - ▶ Each year 25% of VFC providers must have an IQIP visit
  - ▶ VFC–ensure vaccine is stored, handled & administered correctly
  - ▶ IQIP–Immunization Quality Improvement Program–try to improve your immunization rates (childhood &/or adolescent)
- 

# ShowMeVax

- ▶ 43,354,441 Million doses
- ▶ 4,888,948 Million clients
- ▶ Over 89% of VFC providers ordering through the VOS

# School & Child Care Program

- ▶ Schools are required to submit an annual survey by October 15<sup>th</sup> each year
  - ▶ Child care facilities are required to submit an annual survey by January 15<sup>th</sup> each year
- 

# School & Child Care Program

## ► School-Aged Children

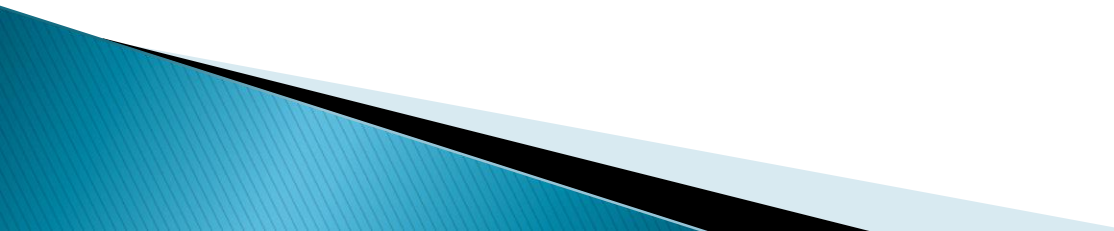
- *Back 2 School* educational campaign
  - resources to help remind parents to get children immunized prior to school registration
- On-line component – school reporting mandatory immunization information annually
  - more than 94% of Missouri schools utilizing
- *Strive for 5* – Preteens, Teens and Vaccines educational campaign
  - resources to help remind parents to immunize their adolescent children according to ACIP recommendations

# Adult Immunizations

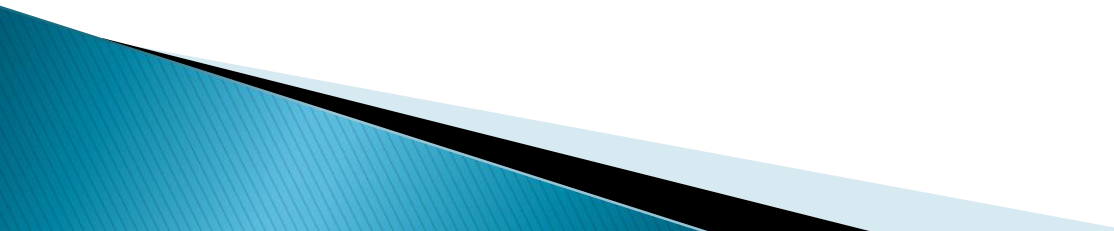
## ► Influenza

- *Tackle the Flu* educational awareness efforts
  - Thousands of pieces of literature distributed across the state
  - Increased awareness for pregnant women, health care workers and persons with special health care needs
- Supplemental influenza funding
  - Targeted at increasing influenza vaccination rates among adults at higher risk for contracting COVID-19

# Programs

- ▶ Childhood Immunizations
  - ▶ Adolescent Immunizations
  - ▶ Adult Immunizations
  - ▶ Influenza
  - ▶ Vaccine Adverse Events Reporting System
  - ▶ Yellow Fever
  - ▶ Emergency Preparedness
  - ▶ Quality Improvement
- 

# 2020 Activities

- ▶ **Educational Awareness Efforts**
  - ▶ **Training Efforts**
    - Educational webinars
      - immunization experts
      - one hour (45 minute presentation/15 minute Q&A)
    - Statewide Immunization Conference
    - On-line opportunities
    - VFC411
  - ▶ **Quality Improvement Initiative**
  - ▶ **COVID-19 Vaccination Planning**
- 

# Partnerships

## ► Partnerships Include:

- Section for Child Care Regulation (licensed child care)
- Department of the Health and Senior Services
  - WIC
  - Office of Minority Health
  - Office of Primary Care and Rural Health
- Department of Social Services
  - Children's Division (registered child care)
  - MoHealthNet (Medicaid & CHIP)
- American Cancer Society
- Missouri Hospital, Primary Care and Pharmacy Assoc.
- Others

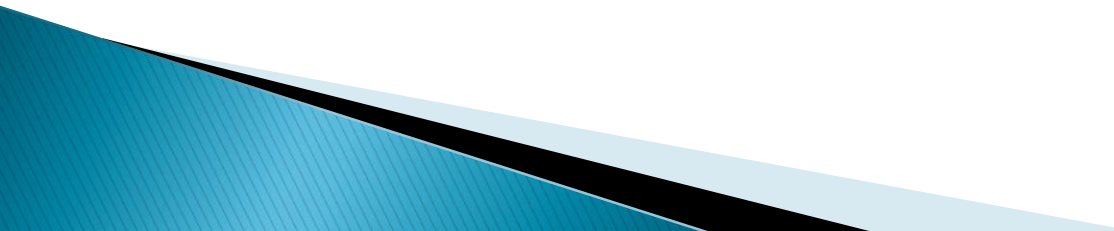


# 2018 Resources

## ▶ Partnership with Bureau of Genetics and Healthy Childhood

- Educational resources
- Text4Baby – Over 8,248 participants
- Pregnancy and Beyond

## ▶ Educational Resources

- Immunization records
  - Coloring pages
  - Stickers
- 

**The key to improving  
immunization  
awareness and rates is  
through education and  
partnership.**

