



Homicide is a leading cause of pregnancy-related death in Missouri. The Pregnancy Associated Mortality Review (PAMR) program partnered with the Missouri Coalition Against Domestic and Sexual Violence (MOCADSV) and the University of

Missouri Continuing Education for Health Professions to offer a free training course, *“Responding to Domestic Violence with Pregnant and Postpartum Patients.”* This course is for anyone who interacts with the maternal population!

The training is online and can be completed at your own pace (you can save and return later!).

Please see the flyer and registration link for more details:

<https://mocadsv.coalitionmanager.org/eventmanager/online/training/details/2588>

Help educate Missouri communities by ordering free materials from the Pregnancy Associated Mortality Review (PAMR) program: <https://stateofmissouri.wufoo.com/forms/q1lk0zyd0qcm041/>.

Here is a look at just a few of these materials.



FREE ONLINE COURSE

RESPONDING TO DOMESTIC VIOLENCE WITH PREGNANT AND POSTPARTUM PATIENTS

SUPPORT MATERNAL HEALTH IN MISSOURI

- FREE continuing education
- Learn best practices for screening and referral
- Take at your own pace

SCAN ME

OR

CLICK HERE

MISSOURI DEPARTMENT OF HEALTH & SENIOR SERVICES
Pregnancy-Associated Mortality Review

M

MOCADSV
Missouri Coalition Against Domestic and Sexual Violence

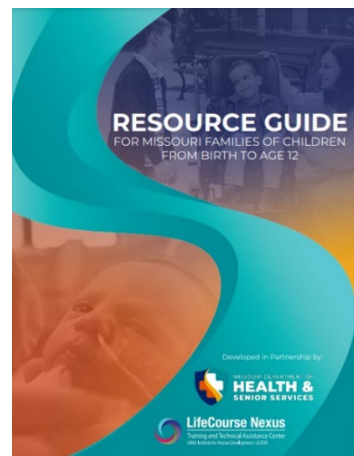


Missouri families now have a new tool at their fingertips: a comprehensive resource guide designed to support parents and caregivers of children from birth to age 12. This guide, developed in partnership by the Missouri Department of Health and Senior Services

(DHSS) and LifeCourse Nexus Training and Technical Assistance Center (UMKC Institute for Human Development), provides descriptions, links, and phone numbers of various statewide resources. It is organized by types of supports which are categorized as discovery and navigation, connecting and networking, and goods and services.

While the guide is useful for all families, it was targeted to assist Missouri families of children with special health care needs and disabilities, highlighting Missouri Family to Family and the Special Health Care Needs Family Partnership. Both programs provide free statewide services and are staffed by parents or family members of individuals with special health care needs or disabilities.

To access the guide online, visit [Health.Mo.Gov/SHCN](https://health.mo.gov/SHCN). To request physical copies of the resource guide, please contact the DHSS Bureau of Special Health Care Needs by phone at (573) 751-6246 or email at info@health.mo.gov.



Can I access previously held MCH HUDDLES and learning opportunities?

The MCH HUDDLES and LPHA Networking meetings hosted by the MCH Services Program are recorded; however, only the content expert speaker is recorded, not the breakout sessions nor the live Q&A. To access the recordings, visit the MCH Services Program webpage at <https://dhssnet.state.mo.us/lphs/mch-services-program/index.php> and click on Events and Trainings. You will find the recorded meetings under Previous Events and Trainings. As the recordings are password protected, please reach out to your District Nurse Consultant (DNC) for the password.



Reminders

- MCH Huddle at 10 am on Tuesday, February 11, 2025
- January 2025 (FFY25) Invoicing tool/DH-38 due February 15, 2025
- MCH FFY2024 Mid-Year Progress Report due February 28, 2025

Upcoming Conferences that may be of interest:

- **32nd Annual Coordinated School Health Conference**
Save the Date, February 19-21, 2025, Lodge of Four Seasons
[Annual Coordinated School Health Conference - MCSHC \(healthykidsmo.org\)](https://healthykidsmo.org)
- **Maternal and Infant Health Convening**
March 5-6, 2025, DoubleTree by Hilton Chesterfield, MO
<https://reg.eventmobi.com/2025-Maternal-and-Infant-Health-Convening>
- **Missouri Oral Health Policy Conference**
March 6-7, 2025, Capital Plaza Hotel and Convention Center Jefferson City, MO
<https://www.oralhealthmissouri.org/oral-health-conference>
- **52nd Conference on the Young Years**
March 6-8, 2025, Osage Beach, MO
<https://dese.mo.gov/childhood/prof-dev/conference-young-years>
- **AMCHP Conference**
March 15-18 Washington, DC
<https://amchp2025.eventscribe.net/aaStatic.asp?SFP=VUpGUFhaSkFAMTg4MTIAUmVnaXN0cmF0aW9u>
- **Active Living Conference**
March 17-20, Manhattan, KS
<https://www.tickettailor.com/events/activenviro/1480867>
- **9th Annual Charting the Life Course Showcase 2025**
April 28-May 1, Kansas City, MO
https://secure.touchnet.net/C20067_ustores/web/product_detail.jsp?PRODUCTID=5774&SINGLESTORE=true
- **38th Annual Postpartum Support International (PSI) Conference 2025**
Save the Date, July 11-13, New Orleans, LA
<https://pmg.joynadmin.org/documents/1029/67194079868a81192955c272.pdf>



Something to Think On

“What the new year brings to you will depend a great deal on what you bring to the new year.”

- Vern McLellan