



MISSOURI DEPARTMENT OF
**HEALTH &
SENIOR SERVICES**

Public Health Emergency Preparedness Planners Meeting

May 17, 2023 10:00 a.m. – 3:00 p.m.
Jefferson City, MO

A large teal-colored shape, resembling a stylized leaf or a rounded diamond, is centered on a dark blue background. The teal shape has a slight gradient and is surrounded by several overlapping, curved bands of orange and yellow, creating a layered, organic effect. The word "Introductions" is written in white, sans-serif font across the center of the teal shape.

Introductions

Agenda

- 
- 10:00 – 10:45 **DHSS Updates**
 - 10:45 – 11:30 **Missouri Public Health Risk Assessment Tool**
 - 11:30 – 12:30 **Lunch**
 - 12:30 – 1:30 **Emergency Partner Updates & MOSWIN**
 - 1:30 – 2:15 **Innovative Ideas and Topics from LPHAs**
 - 2:45 – 3:00 **Networking and Adjourn**

DHSS Updates

Eric Hueste, *DHSS OEC*

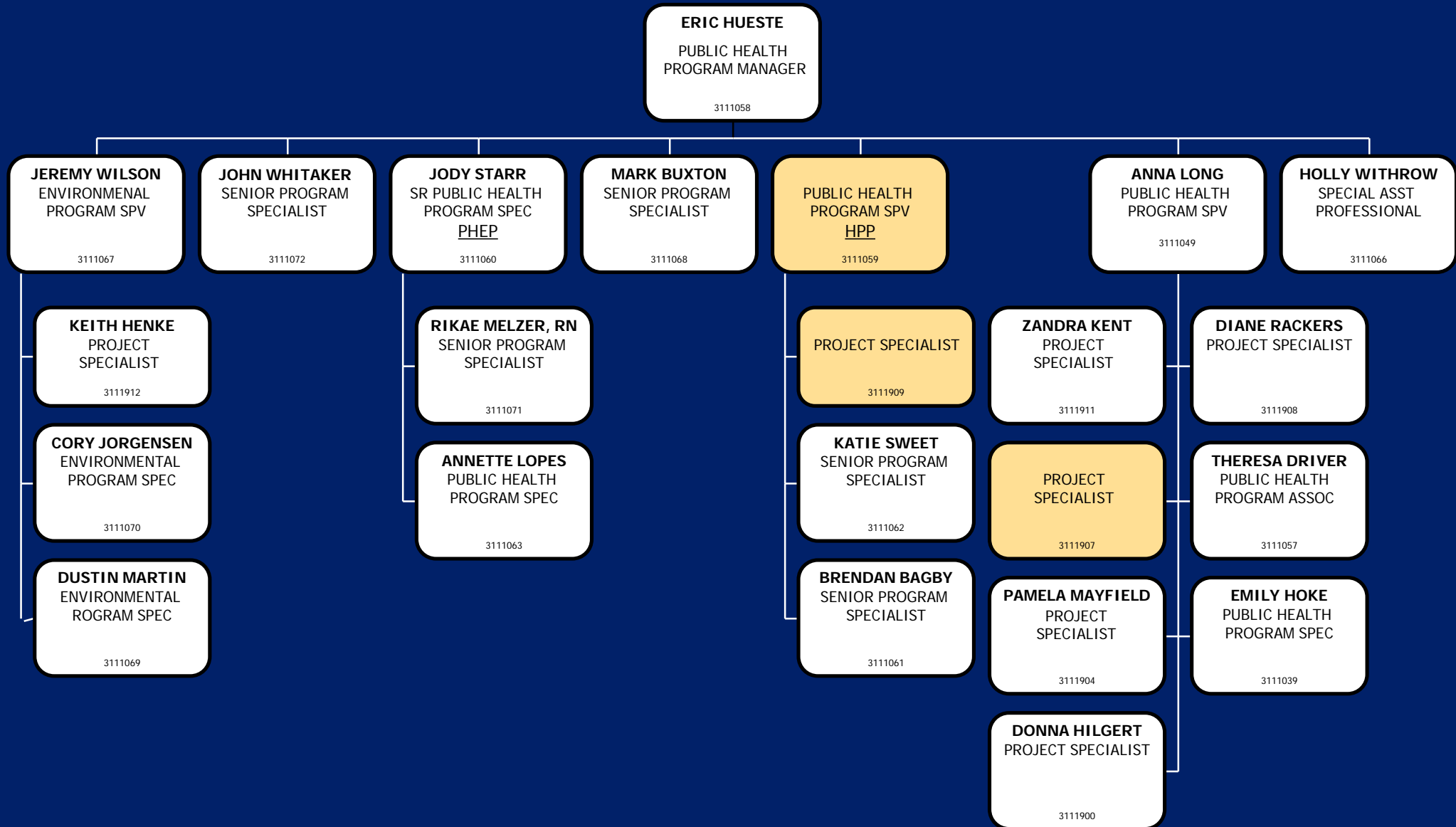
Jody Starr, *PHEP Coordinator*



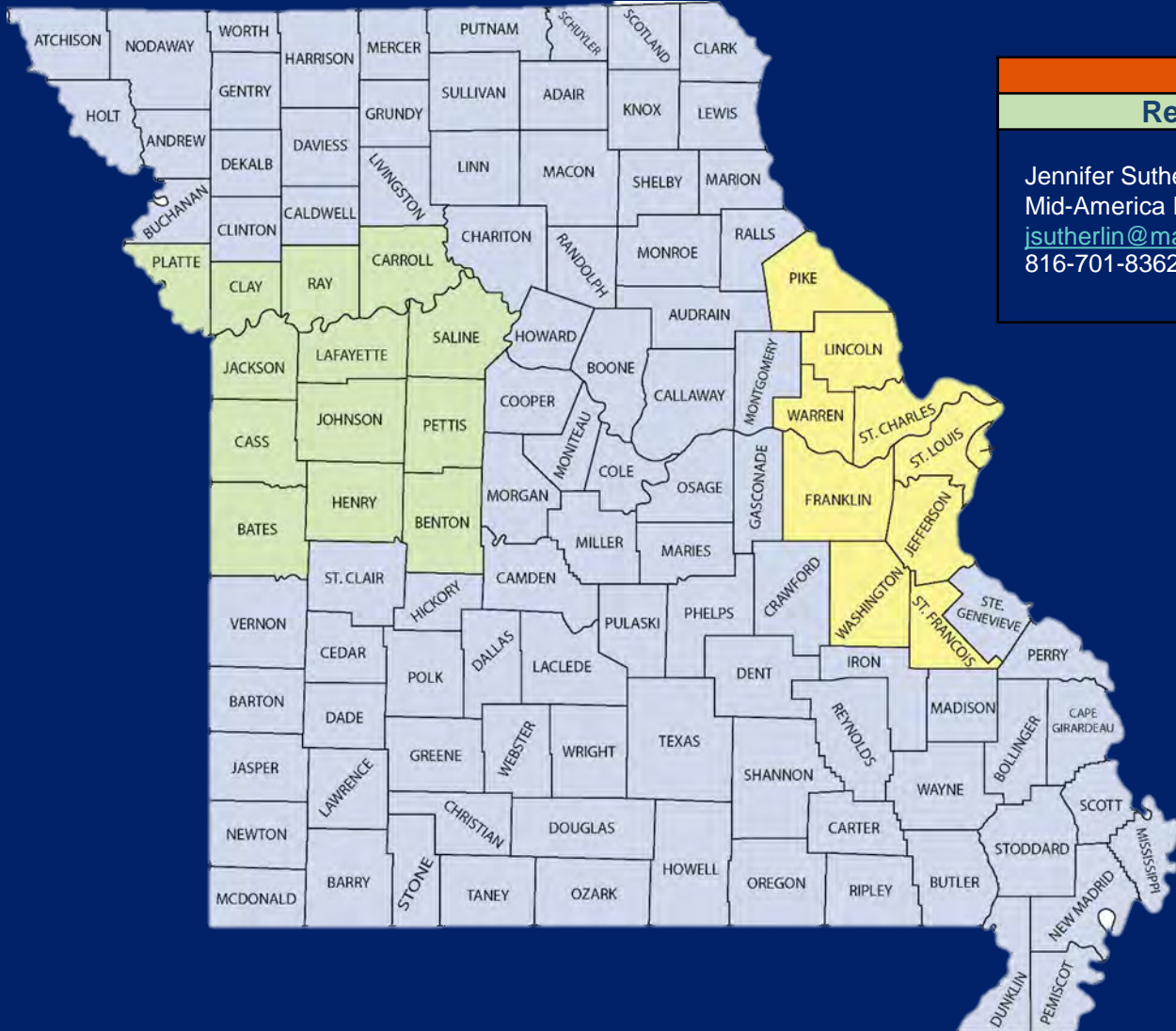
DHSS Updates / Activities

- ❑ DHSS / OEC Updates
- ❑ PHEP Updates
- ❑ PPE warehouse

MO DHSS Office of Emergency Coordination



Missouri Healthcare Coalitions



Healthcare Coalition (HCC) Contacts		
Region A	Non-Urban Rural	Region C
Jennifer Sutherlin Mid-America Regional Council jsutherlin@marc.org 816-701-8362	Kara Amann-Kale Missouri Hospital Association KAmann-Kale@mhanet.com 573-893-3700	Brad Zoref St. Louis Area Regional Response System Brad.Zoref@ewgateway.org 314-421-4220





MISSOURI DEPARTMENT OF
HEALTH &
SENIOR SERVICES

- Eric Hueste
 - eric.Hueste@health.mo.gov
- Jody Starr
 - jody.starr@health.mo.gov
- Rikae Melzer, RN
 - rikae.melzer@health.mo.gov
- Annette Lopes
 - annette.lopes@health.mo.gov

Preparedness@health.mo.gov

Questions and
Contact Information

Agenda

10:00 – 10:45



DHSS Updates

10:45 – 11:30



Missouri Public Health Risk Assessment Tool

11:30 – 12:30



Lunch

12:30 – 1:30



Emergency Partner Updates & MOSWIN

1:30 – 2:15



Innovative Ideas and Topics from LPHAs

2:45 – 3:00



Networking and Adjourn

Intro to Missouri Public Health Risk Assessment Tool (MOPHRAT)

Mark Pethan, *SEMA PHEP/HPP Grant Coordinator*
Kay Beesley, *SEMA Preparedness Planner*
Annaliese Fitzsimmons, *Webster County Health Department*
Scott Allen, *Webster County Health Department, Administrator*



WHY A COMPREHENSIVE RISK Assessment?

- ❑ Identify and understand potential disasters and hazards
- ❑ Decide which hazards require attention and what actions must be planned for
- ❑ Guide and JUSTIFY FUNDING, RESOURCES

- ❑ STRENGTHEN PLANS
- ❑ BETTER PREPAREDNESS

- ❑ Collaborative planning builds relationships and resources
- ❑ MEET PHEP & Contract Requirement

MOPHRAT Demo

- ❑ Tool developed by Drexel School of Public Health for the State of Pennsylvania (state-wide assessment)
- ❑ Excel Based Tool
- ❑ Designed to measure baseline levels of morbidity, mortality and health care/public health services
- ❑ AND contrast baseline with specific hazard scenarios to identify surge needs
- ❑ Revised to reflect MO incidents and recent public health events; Ferguson Unrest/Protests, NMSZ Earthquake, flooding in MO, 2022 Measles outbreak in Ohio and Joplin tornado.

Key, thought provoking and info gathering sections of the tool:

- ❑ Complete Public Health Service Impact Section of Baseline Health, Services and Infrastructure Tab
 - ❑ Number of Total Public Health Staff
 - ❑ Number of Case Reports per day requiring investigation, monitoring, tracking
 - ❑ Number of Specimens Processed per day
 - ❑ Hours of health communication/public information per week
- ❑ Assess and Complete Baseline Public Health Preparedness Capabilities
- ❑ Assess and Complete Baseline Healthcare Preparedness Capabilities
- ❑ Within Community Characteristics section determine the following:
 - ❑ College campus, large public buildings/spaces and occupancy during busiest time, daytime population density (sq. mile)
 - ❑ <https://www.fema.gov/emergency-managers/practitioners/resilience-analysis-and-planning-tool>

Reference Documents

- ❑ MOPHRAT Instruction Guide
- ❑ State-wide Baseline Data – Excel Doc
- ❑ Example Tool (St. Charles County, Columbia/Boone County, Warren Co.)

What Next?

- ❑ Upcoming Webex Trainings – Scheduling one (1) for first week of June and another for the second week of June.
- ❑ Cap. 1 Work Plans that identify a risk assessment process – Reach out to SEMA (Kay Beesley & Mark Pethan) for technical assistance.
- ❑ Place the MOPHRAT package (tool & resource documents) on DHSS SharePoint site
- ❑ Introduce the tool to other stakeholder groups (Emergency Management & Healthcare Coalitions)
- ❑ Once completed, risk assessments will reside in WebEOC file library (folders by county)

- Mark Pethan
 - Mark.pethan@sema.dps.mo.gov
 - (573) 526-3644

- Kay Beesley
 - Katie.beesley@sema.dps.mo.gov
 - (573) 526-9364

- Annaliese Fitzsimmons
 - afitzsimmons@webstercohealth.com

- Scott Allen
 - sallen@webstercohealth.com

Questions and
Contact Information

Agenda

10:00 – 10:45



DHSS Updates

10:45 – 11:30



Missouri Public Health Risk Assessment Tool

11:30 – 12:30



Lunch

12:30 – 1:30



Emergency Partner Updates & MOSWIN

1:30 – 2:15



Innovative Ideas and Topics from LPHAs

2:45 – 3:00



Networking and Adjourn



MISSOURI DEPARTMENT OF
HEALTH &
SENIOR SERVICES

Lunch

Agenda

10:00 – 10:45



DHSS Updates

10:45 – 11:30



Missouri Public Health Risk Assessment Tool

11:30 – 12:30



Lunch

12:30 – 1:30



Emergency Partner Updates & MOSWIN

1:30 – 2:15



Innovative Ideas and Topics from LPHAs

2:45 – 3:00



Networking and Adjourn

Emergency Partner Updates

Brian Bax, Missouri Department of Mental Health

Creating the LPHA Well-being Playbook

- ❑ Part of the Infrastructure Grant
- ❑ Based on the American Hospital Association (AHA) Well-being Playbook
- ❑ Creating Workgroup of 20 people (10-12 LPHA Volunteers)
- ❑ Summer/Fall 2023 - Perform Job Shadows and Focus Groups
- ❑ Spring 2024 - Begin to Implement Playbook
- ❑ Ongoing – Help Facilitate Playbook Implementation

DMH Cares: <https://dmh.mo.gov/wellness/dmh-cares>

- Brian Bax

- Brian.bax@dmh.mo.gov
- 573-751-7798

Questions and
Contact Information

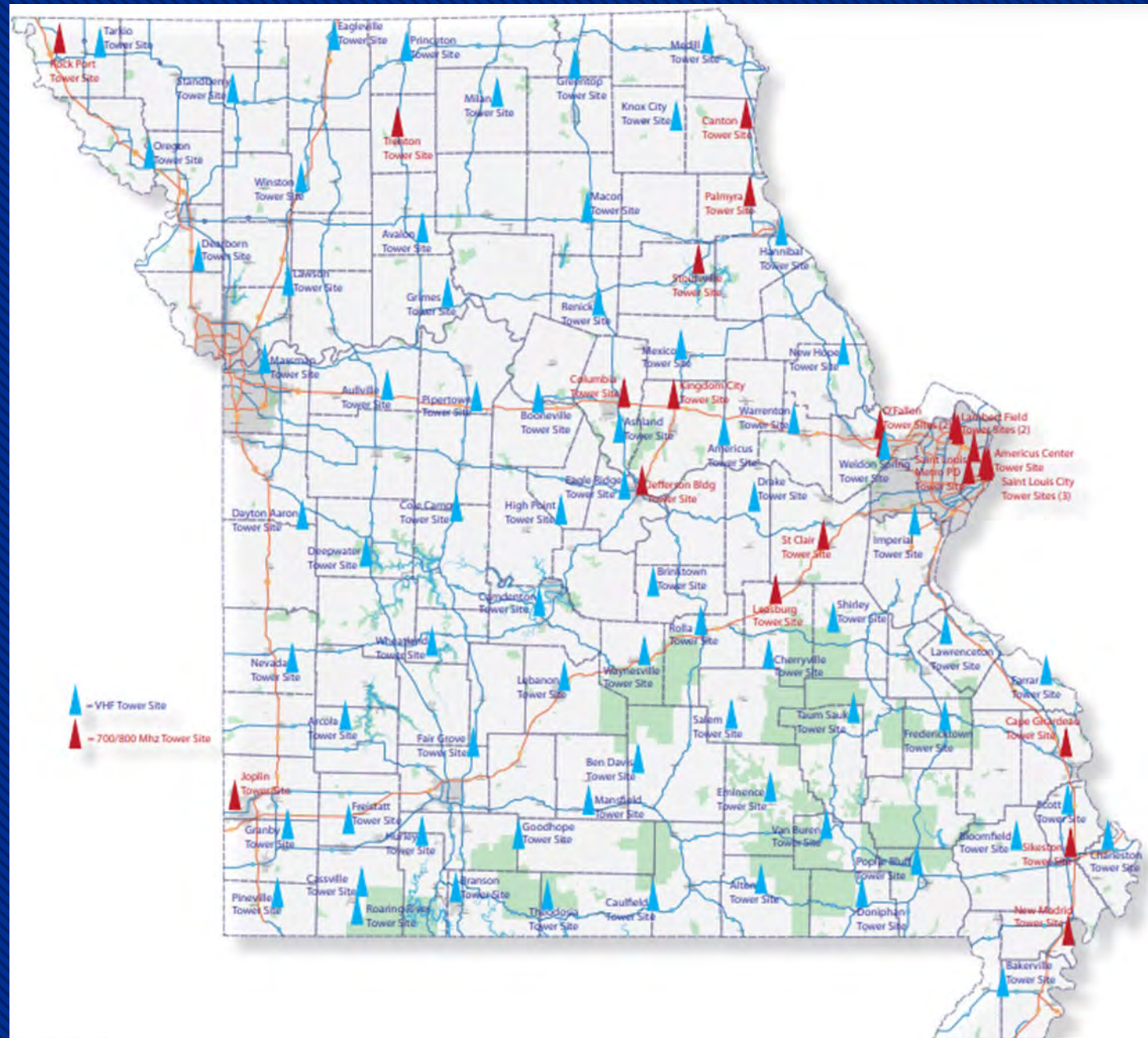
Missouri Statewide Interoperability Network (MOSWIN)

DHSS Office of Emergency Coordination



Mission of MOSWIN

- ❑ MOSWIN provides multidiscipline interagency communications statewide, regionally and locally
- ❑ Redundant communication method for public and healthcare partners



How it Works

- ❑ Digital radio network connecting public safety personnel across the state
- ❑ Creates shared talk groups

Talk Groups

Statewide

- DHSS Common
- DHSS Tac
- DHSS Temp (1-3)
- MHA 1
- MO IO Call
- MO IO (1-4)
- MO EVENT (1-5)

Regional

- DHSS Reg _
- REG _ IO Call
- REG _ IO (1-4)
- _ EVENT (1-5)

Closing and Next Steps

- ❑ LPHA Complete Online Survey by 6/9/2023
 - ❑ Radio identification and talk groups
 - ❑ <https://survey123.arcgis.com/share/01174fc8f38340fda6a6385cba8e6a30>
- ❑ DHSS share updated Communications Plan
- ❑ DHSS coordinate training and drills for LPHAs

- Rikae Melzer, RN
 - rikae.melzer@health.mo.gov
- Brendan Bagby
 - Brendan.bagby@health.mo.gov
- Anna Long
 - anna.long@health.mo.gov

Questions and
Contact Information

Agenda

10:00 – 10:45



DHSS Updates

10:45 – 11:30



Missouri Public Health Risk Assessment Tool

11:30 – 12:30



Lunch

12:30 – 1:30



Emergency Partner Updates & MOSWIN

1:30 – 2:15



Innovative Ideas and Topics from LPHAs

2:45 – 3:00



Networking and Adjourn

Innovative Ideas

Chris White, Cole County Health Department
Karen Peak, Christian County Health Department

Cole County Health Department











RESERVED
PARKING

**Christian County
Health Department**

Karen Peak

Other COVID Projects

- Chris White

- cwhite@colecounty.org

- Karen Peak

- Karen.peak@lpha.mo.gov

Questions and
Contact Information

Discussion Topics from the Frontline

DHSS Office of Emergency Coordination



Topics

- ❑ COVID After Action Reports
- ❑ Ideas for Planners to gather by region
- ❑ Rebuild credibility and trust within Public Health
- ❑ How to leverage Capability Leads

- Jody Starr
 - jody.starr@health.mo.gov
- Rikae Melzer, RN
 - rikae.melzer@health.mo.gov
- PHEP
 - preparedness@health.mo.gov

Questions and
Contact Information

Agenda

10:00 – 10:45



DHSS Updates

10:45 – 11:30



Missouri Public Health Risk Assessment Tool

11:30 – 12:30



Lunch

12:30 – 1:30



Emergency Partner Updates & MOSWIN

1:30 – 2:15



Innovative Ideas and Topics from LPHAs

2:45 – 3:00



Networking and Adjourn



Networking

New and experienced LPHA staff, Capability leads, OEC staff, DMH staff, SEMA staff, PCA staff

Closing

- ❑ Please complete survey
- ❑ Next Planners Meeting Fall 2023
- ❑ Meeting material will be posted here:
 - ❑ <https://clphs.health.mo.gov/lphs/oec.php>



Closing Survey

- ❑ Open your camera on your mobile device and scan over the QR code.
- ❑ Click on the yellow URL link that pops up on your phone.
- ❑ Please take the 2-minute survey!

Thank you for taking the time to complete this survey. The information provided will assist us in planning meaningful future meetings!

